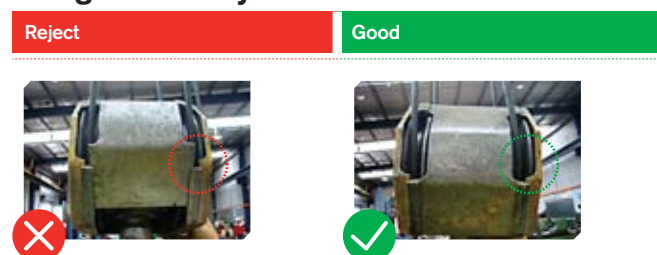


Inspection and Disposal

Bridge & Gantry Cranes and Lifting Accessories

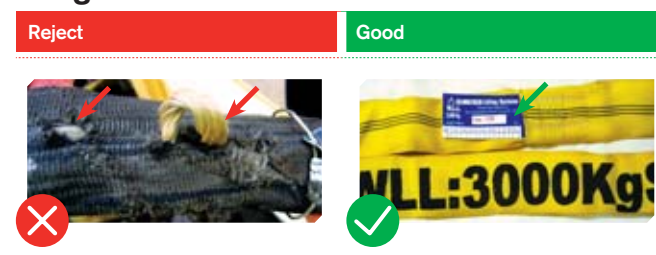
Bridge & Gantry Cranes



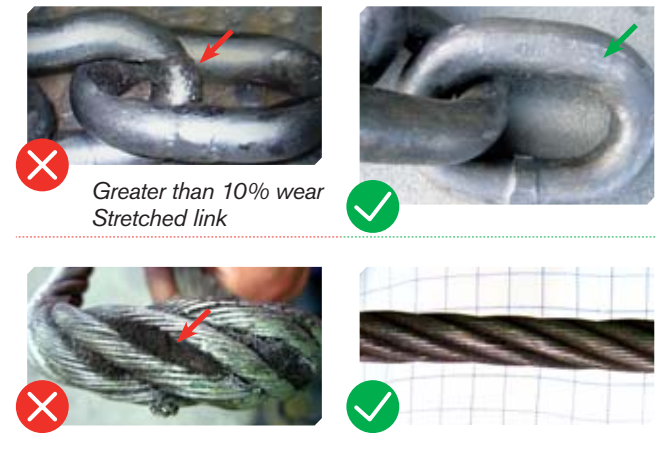
Labelling



Slings



Accessories



| Inspection | Crane | Slings | Accessories | Magnets and Vacuum |
|-----------------------------|--|------------------------------|------------------------------|------------------------------|
| Pre-operational | Each shift | Each shift | Each shift | Each shift |
| Daily additional | N/A | N/A | N/A | Safety devices, daily |
| Routine | See table below based on crane class | Competent person, 3 monthly | Competent person, 3 monthly | Competent person, 3 monthly |
| Periodic | See table below based on crane class | Competent person, 12 monthly | Competent person, 12 monthly | Competent person, 12 monthly |
| Major | 10 years mechanical 25 years structural | N/A | N/A | N/A |
| Manufacturer recommendation | The above applies unless the manufacturer recommends more frequent inspections | | | |

Inspection Table

Recommended minimum service requirements

| Crane classifications | C1 | C2 | C3 | C4 | C5 | C6 | C7 | C8 |
|---|------|----------|--------|--------|--------|---------|----------|-----|
| | M1 | M2 | M3 | M4 | M5 | M6 | M7 | M8 |
| Operating hours per day | ≥0.5 | >0.5 – 1 | >1 – 2 | >2 – 4 | >4 – 8 | >8 – 16 | >16 – 20 | >20 |
| Routine maintenance service, weeks | 12 | 12 | 12 | 12 | 8 | 8 | 4 | 4 |
| Periodic inspection, weeks | 48 | 48 | 48 | 24 | 24 | 16 | 12 | 8 |
| Third party inspections, years (optional) | 3 | 3 | 2 | 2 | 2 | 1 | 1 | 1 |

Source table 7.2.1 Australian Standard AS 2550.3 – 2005, Cranes, hoists and winches – Safe Use – Bridge, gantry, portal, jib and monorail cranes.